

# Streamlining Processes with Seamless Data Exchange

IBM EDI Solutions Tailored by: **EVERSTAR**



## What is IBM EDI?

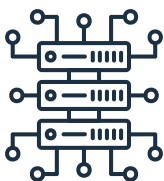
IBM-powered Electronic Data Interchange (EDI) automates high-volume, accurate data exchange between businesses and their partners, reducing manual processes and improving efficiency.



## Why Choose EverStar Technologies?



**Experience:** 20 years of tailoring solutions for our clients, for manufacturing, healthcare, distribution, logistics, retail, and more.



**Seamless Integration:** Connect IBM EDI with ERP, CRM, and supply chain systems.



**Scalability:** Solutions that grow with your business.



## Key Benefits of IBM EDI

- ✓ Automates workflows such as purchase orders, invoices, and shipping notices.
- ✓ Reduces errors and improves accuracy.
- ✓ Enhances collaboration across supply chains.
- ✓ Provides real-time visibility into operations.



## Industries Expertise



Manufacturing



Healthcare



Food & Beverage



Retail



Distribution



Logistics

Ready to transform your operations



[www.everstar-tech.com](http://www.everstar-tech.com)



614-795-0545